

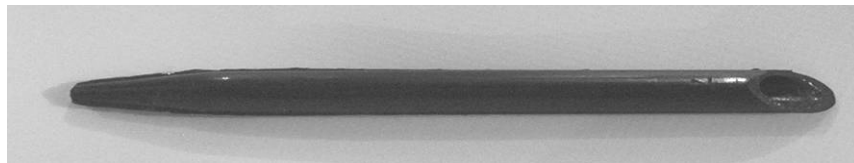


Instructions for Lacing a Bongo Surface

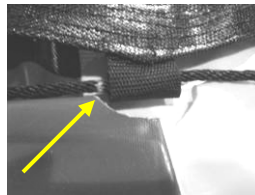
1. Spread out your deflated Bongo so it is face up and in the most uniform circular shape possible.
2. Take your new surface and lay it out over the center of the tube. There are two warnings on your new surface. Align the surface so that one warning is centered on the panel where you typically attach the ladder.
3. Your lacing rope should have three different marks on it. One at the center and one on each end (12" from each end).
4. You will need some sort of a needle (fid) to lace the rope through the loops on the surface and the Bongo tube. You can use an empty ballpoint pen tip or something hollow but pointed on the other end. Insert over the end of the rope. If necessary, heat the end of the rope with a match or lighter to melt it to a point for easy insertion into the fid.



As an alternative for the pen tip, you can purchase a 1/4" rope splicing fid at your local hardware or marine store. You can usually find these in places that sell marine rope. The one shown below is black plastic but it can be different colors and may be metal vs plastic.



5. Pick any corner of the surface to start with. Position the rope center mark immediately to the left of the corner loop on the bounce surface. Use a spring clamp or have someone hold it to prevent this mark from moving while lacing.



6. Use the fid to lace the rope to the left of the mark. You will lace through each loop alternating between the colored tube fabric and the black webbing loops of the bounce surface. Lace this half of the rope around until you have come to the exact opposite spot on the Bongo tube. The end mark should be at the corner exactly opposite the starting point.

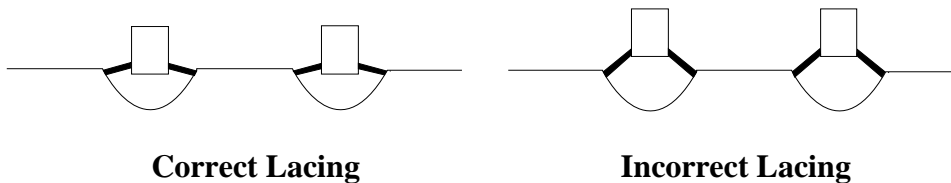
CAUTION: Be extremely careful when pulling the rope through the loops. Only pull the rope through 2-3 loops at a time, guiding the rope with both hands so it glides freely. Stop and adjust the position of the loops & rope if

you feel ANY resistance while pulling. Friction between the rope and loops can cause permanent damage to the product.

- Put the fid onto the other end of the rope and lace the other half of the surface to the right of the center mark. Periodically stop to inspect that you did not miss any loops while lacing.
- Once both ends of the rope are finished lacing at the opposite corner from your center starting point, you now need to tie the knot. Place the two ropes next to each other with the knot marks aligned. Hold both rope ends together and tie a knot immediately outside of the knot marks. After the knot is tied, the marks on the left and right side should both be essentially touching and right below the knot. When done properly, the marks will be located between the knot and the tube.



- During lacing make sure not to pull the rope too tight as you go along. You should pull it tight enough that the rope lies naturally straight from loop to loop. If after you have tied your knot you have a lot of excess you should pull on each panel to pull out the slack in the rope, making sure the lacing is as uniform as possible around the entire surface. Make sure that the loop is pulled snug against the webbing loop and not the colored fabric so to not cause any extra stress on the fabric. Tuck the tail of the rope to the inside of the tube (below the surface).
- Inflate and inspect. The rope should come out of each loop with a very shallow angle. If the angle is too sharp, it could cause premature tearing of the loops on the Bongo. Deflate and adjust the lacing rope if necessary to achieve uniformity around the surface.



- Installation complete.

**Call RAVE Customer Service or visit ravesports.com with any questions.
1-800-659-0790**