



Stop! Read this manual carefully before using this product!

Product	Maximum Capacity	Maximum Weight	Minimum Water Depth
TANGO™	Three (3)	400 lbs. (181 kg)	48 in. (1,2 m)

Contents:

TANGO™ – (1) TANGO™ tube, (5) Interloc™ QuickStraps™, (1) Repair Kit

Watersports Safety Code

Watersports are fun and challenging but involve inherent risks of injury or death. To increase your enjoyment of the sport and to reduce your risks, use common sense and follow these rules:

Before you start:

- Familiarize yourself with all applicable federal, state, and local laws, the risks inherent in the sport, and the proper use of the equipment.
- Know the waterways.
- Use caution and common sense.
- Do not use within 3,0m (10ft.) of pool edge, boats, docks, or any other hard obstructions.
- Do not attempt or allow somersaults. Landing on the head or neck can cause serious injury, paralysis or death.
- Never use at night, or in low-light conditions.
- Never use in poor weather conditions, excessive wind, waves or lightning.
- Do not use on dry land.
- Do not use without proper anchoring.
- Do not jump or dive from the product.
- Never swim under the product.
- Ensure all users are capable swimmers and are not excessively fatigued. Do not allow anyone to attempt to swim to or from the product that are not physically able to do so.
- Always ensure that the swimming area around the product is free of any submerged hazards or other obstructions. Ask about the local water conditions before use.
- Only allow use of the product with proper supervision. Secure the product when not in use to prevent access by any other users.
- Do not jump or dive from this item.
- Do not jump onto this item from any other item.
- Do not use in water where there are sharks or other animals that could pose a threat to humans.
- If product is used indoors, always ensure adequate ceiling height overhead.
- Always remove personal items such as rings, watches or other sharp objects before use.

Your equipment :

- Check all equipment prior to use. Inspect your product for missing, defective or worn parts. Never use the product if excessive wear or damage are detected.

It is the owner's responsibility to read the owner's manual and instruct all users in the safe operation of these products. By inflating these products you hereby agree to the Release of Liability, Claim Waiver, and Assumption of Risk Agreement in this manual. Please read this manual prior to inflating and using these products and keep for future reference. As with any action sport, recklessness, inexperience, misuse, or neglect of the equipment may result in serious injury or death.

WARNING

USE OF THIS PRODUCT AND PARTICIPATION IN WATERSPORTS INVOLVES INHERENT RISKS OF INJURY OR DEATH.

- This product should never be used by children except under adult supervision.
- Not intended for use by children under 5 years of age.
- This product is not a personal flotation device.
- Always wear a floatation vest (PFD) as required by the authorities in area of use.
- Never place wrists or feet through handles, straps or rings.
- Do not use in water less than that indicated in warnings and Owner's Manual.
- Do not use within 10ft (3,0m) of pool edge, lane markers or other hard objects.
- Never swim under the product.
- Do not jump or dive from the product.
- Do not exceed the manufacturer's recommended number of users for your particular product.
- Do not use while under the influence of alcohol or drugs.
- Read Owner's Manual before use.

Made in China

CAUTION

Watersports can be safe and fun for all levels of enthusiasts. The Operator's Manual is presented to enhance your enjoyment of the sport. It is intended to alert you to some of the potentially dangerous conditions that can arise in all watersports. It is the owner's responsibility to read the owner's manual and instruct all users in the safe operation of these products. By inflating these products you hereby agree to the Release of Liability, Claim Waiver, and Assumption of Risk Agreement in the Owner's Manual.

To reduce the risk of injury or death, follow these guidelines:

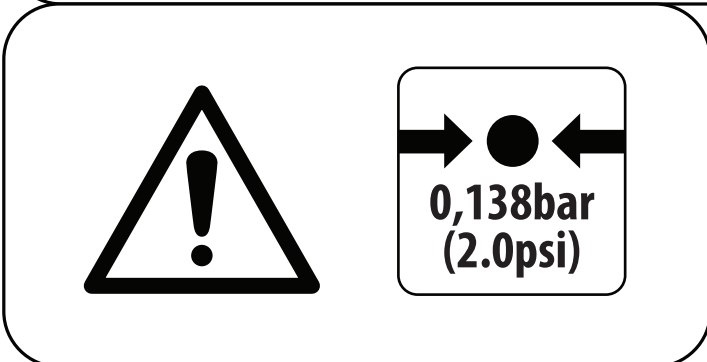
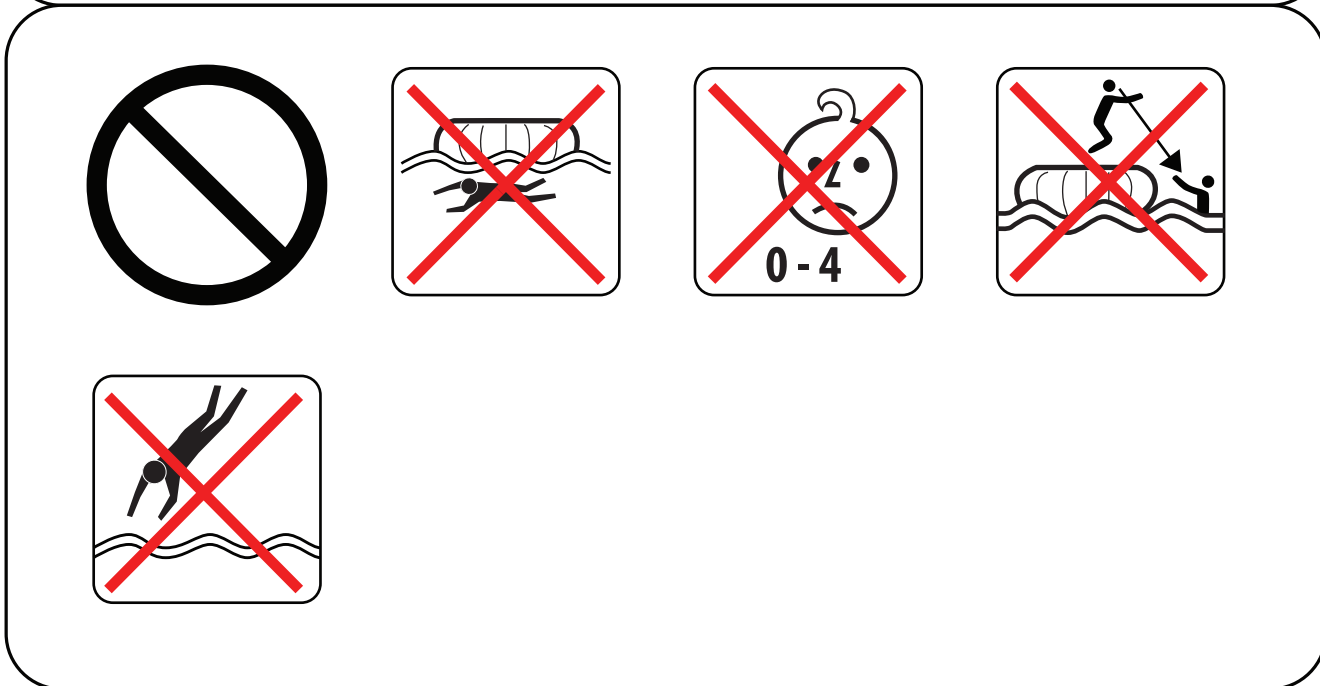
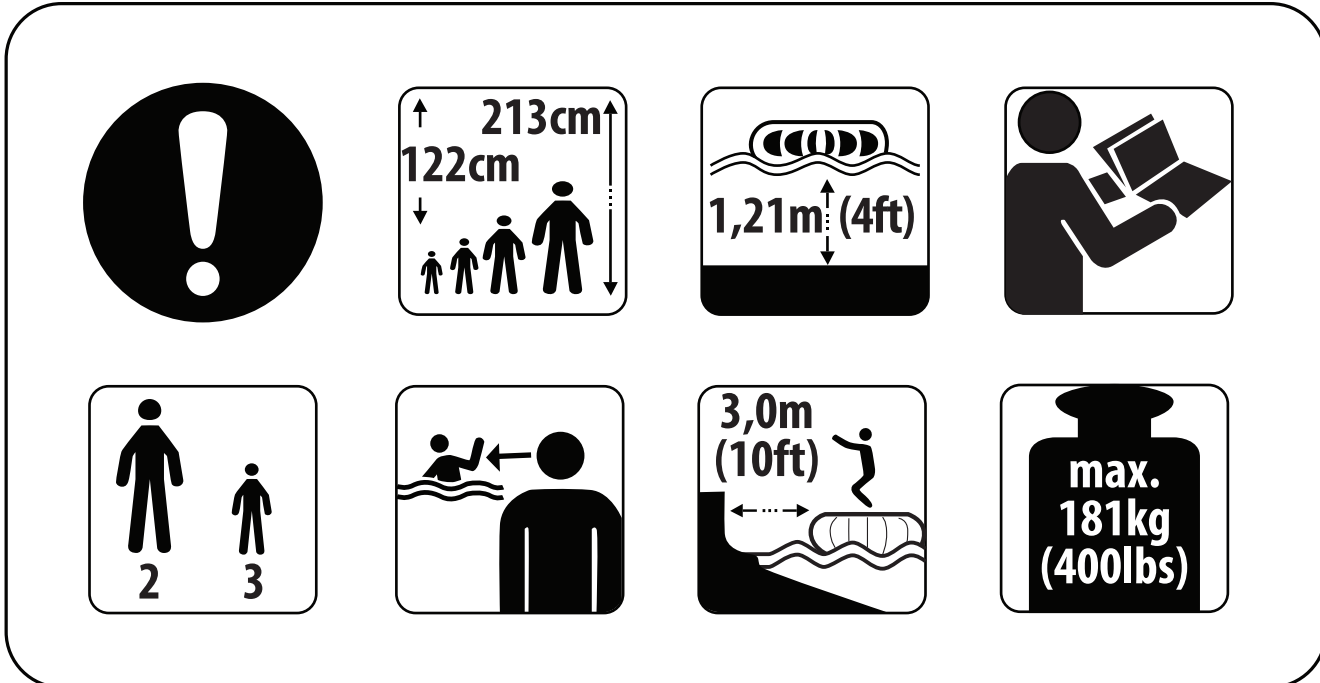
- Carefully read the product Owner's Manual and follow the instructions.
- Take all reasonable precautions in the use and operation of your trampoline and/or aquapark.
- Teach anyone using your trampoline and/or aquapark about safe guidelines prior to use.
- Know your own limits. Stop when you are tired. Act responsibly. Be in good physical condition and be cautious in your use of this or any other water sports product.
- Periodically check mooring bridles and/or lines to ensure safety. Replace any portion of mooring and/or connection system that shows signs of wear.
- Do not add any hardware or attachments not otherwise supplied by the manufacturer.

THE WARNINGS AND PRACTICES SET FORTH ABOVE REPRESENT SOME COMMON RISKS ENCOUNTERED BY USERS AND DOES NOT PURPORT TO COVER ALL INSTANCES OF RISK OR DANGER. PLEASE USE COMMON SENSE AND GOOD JUDGMENT.

Please contact the dealer or manufacturer of this product if you have any questions about proper selection, function, or safe use of this product.

Made in China

- Always check for proper inflation before each use. Temperature and environmental changes can cause changes in tube pressure. Using the product over or under inflated is dangerous to users and can cause damage to the product, voiding the warranty.
- Always check security of the anchor(s) and all attachments before each use.
- Always wear a floatation vest (PFD) as required by the authorities in area of use.



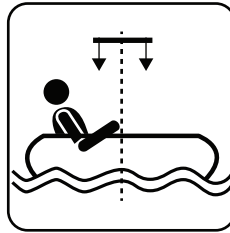
NORTH SPORTS, INC.
WHITE SALMON, WA - U.S.A.
STANDARDS: EN 15649: 2012, W.A.S.
PRODUCT: TANGO
MADE IN P.R.C.
DESIGNED IN U.S.A.



No protection against drowning!
Keine Schutz gegen Ertrinken!
Pas de protection contre la noyada!
No protege contra el ahogamiento!
Nessuna protezione contro l'affogamento!
Beschermt niet tegen verdrinken!

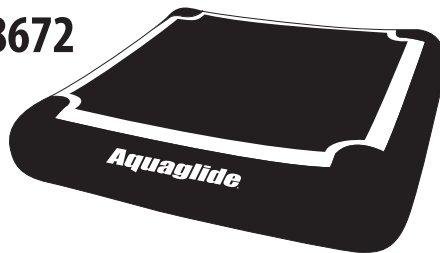


Only for swimmers!
Nur für schwimmer!
Seulement pour les nageurs!
Sólo para nadadores!
Solo per i nuotatori!
Alleen voor zwemmers!



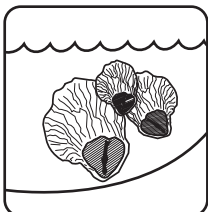
North Sports, Inc.
#1 North Shore Dr SE
White Salmon, WA 98672
USA

Compliant with
DIN EN-15649: 2012



L: 201 cm (79")
W: 201 cm (79")
H: 46 cm (18")

WARNING



Prolonged exposure to salt water can damage and/or shorten the expected lifetime of this product. The marine environment includes many damaging elements including corrosion, abrasion and damage from marine life such as barnacles. Regular cleaning and rinsing with fresh water can reduce these risks. A PVC-safe antifouling paint should be used to help protect this product against marine growth. **DAMAGE CAUSED BY EXPOSURE TO SALT WATER IS NOT COVERED BY WARRANTY.**

Aquaglide

PLATINUM™
performance

Assembly

1) Locate a flat, dry area with access to electrical outlet or extension cord. The best setup position will also make launching easy, so ideally the TANGO™ tube should be carefully carried into position at the water's edge. NOTE: Dragging or sliding the product over pool deck or ground either before or after inflation can cause permanent damage.

2) Once in the setup/ launch position, unfold the TANGO™ completely and locate the Main Valve. Remove the valve cap. The Main Valve is a Halkey-Roberts type spring valve which has both 1-Way and 2-Way settings. Twist the valve stem 90 degrees to open or close valve. It is possible to inflate the item in either setting, however, make sure to close the valve (1-Way setting) before finishing the inflation.

3) Using a high output pump 1.6 psi minimum (0,110 bar) **inflate the TANGO™ to 2.0 psi. (0,138 bar)** Check for proper air pressure using a manometer. Inflation times can vary, but the TANGO™ should be firm and tight when completely inflated. Once inflation is complete, be sure to replace the valve cap on each valve. Tamper-proof caps are provided with the repair kit if necessary. **DO NOT OVER-FILL.** Excessively high pressure can cause damage to the product and may void the warranty. Carefully monitor air pressure in the product especially during hot weather.

WARNING: Do not use an air compressor to inflate tube. Air compressors are designed for high pressure inflation and can cause tube to burst if over-inflated.

WARNING: Do not use the TANGO™ without adequate air pressure - 1.6 p.s.i. (0,110 bar) minimum.

4) To launch the TANGO™, make sure to have at least 2 people evenly spaced around the product to help carry it. **NEVER DRAG THE PRODUCT! YOU MUST LIFT AND SET THE PRODUCT IN THE WATER TO AVOID ANY ACCIDENTAL TEARING AND/OR ABRASION.**

5) If using the TANGO™ as part of a challenge course or aquapark, the next step is to connect it in the proper sequence using Interloc™ QuickStraps™. Use the 5 QuickStraps™ included to connect the TANGO™ to a Swimstep™ or Runway™ boarding platform. It may be easiest to make connections at the pool edge, or in the water. *See **QuickStrap™ Connections** below.

Anchoring

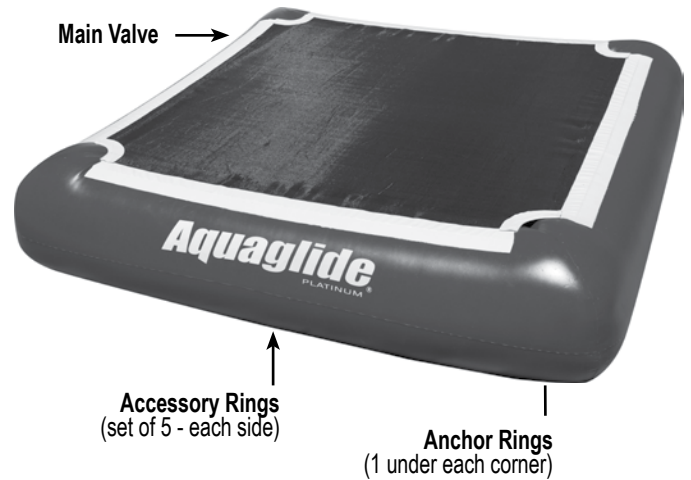
IMPORTANT: Proper anchoring is essential to the safety and performance of your product. Due to the wide variety of conditions, we advise using a professional skilled in mooring and anchoring, and experienced with local conditions. If improperly anchored, the product can move and/or float away. North Sports, Inc. is not responsible for any damage, injuries or losses due to improper anchoring.

NOTE: There are 4 heavy duty anchor rings underneath the TANGO™. These rings are located underneath the product, near each of the 4 corners.

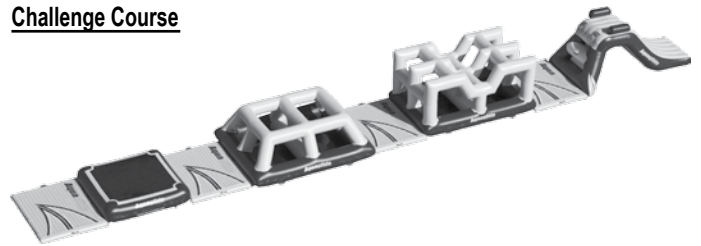
Due to the high loads that may be generated in open water settings, you must use AT LEAST 2 of these rings to spread the load and properly secure the product under normal conditions.

Tango™

ADVENTURE SERIES



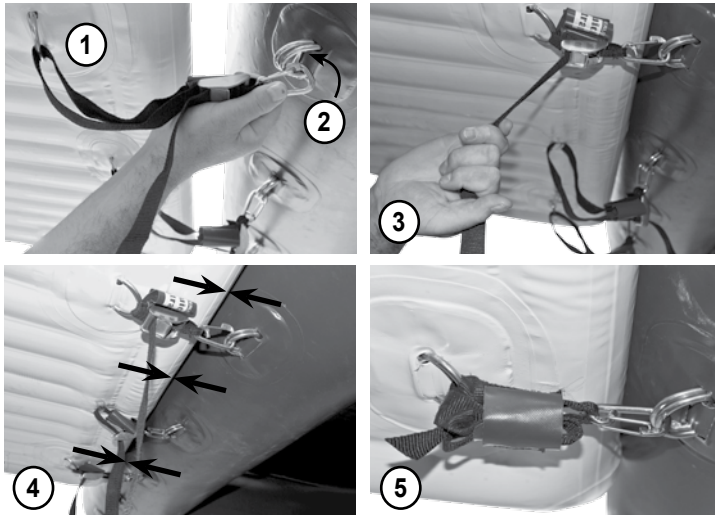
Challenge Course



Here are some general guidelines for anchoring your product. These guidelines are not intended to replace the need for professional installation.

- 1) Choose a location for your TANGO™. Place the product in at least 48 inches (1.2 m) of water depth and in a safe protected area. Review rules and restrictions with your local authorities.
- 2) Carefully check the water below the selected area for adequate water depth and for any sharp or dangerous objects or other hazards.
- 3) Keep a safe distance from pool edge, docks, boats, boat lifts, and any other structures. **DO NOT** tie the product to a dock, as product damage and personal injury can easily occur.
- 4) Mooring in a pool setting typically involves the use of high strength, elastic mooring lines (sold separately) placed horizontally at water level and attached to anchor eyes such as those for lane lines. Proper mooring will maintain the minimum safe distance away from all pool edges, lane lines and/or any other hazards and the minimum water depth required for each individual item. The same criteria are required for mooring in open water, however, vertical mooring lines (sold separately) are typically used.
- 5) Anchors and mooring lines are sold separately. Multiple moorings should be used with challenge courses and special care will need to be taken on large, windy bodies of water. Professionally installed ground screws are an acceptable anchor for open water. Heavy weights and other mooring solutions may also be used as local conditions dictate.
- 6) If strong winds or storms are expected, it is best to remove the product from the water and secure and/or deflate it.

QuickStrap™ Connections



*NOTE: images are shown from below

STEP 1: Connect the QuickStraps™. Use the webbing and buckles to connect all 5 QuickStraps™ to one item. Generally, it is best to leave the straps permanently connected to the Swimstep™ platform via the webbing and buckle connection as shown in **step 1**. Simply tighten and loosen the length of the webbing to allow enough room to connect and disconnect the platform using the Quick hook. This is best done from the water, with the buckle facing down for easy access.

STEP 2: Bring the platform near the item and use all 5 Quick hooks to connect them, leaving the straps loose shown in **step 2**.

STEP 3: Firmly pull the tail of each QuickStrap™ as shown in **step 3** until the gap between platform and main item is completely closed.

STEP 4: Double-check to confirm that the gap between items is closed tightly as shown in **step 4** before moving on.

IMPORTANT: To prevent injury the gap **MUST** be completely closed and tight. Always use all 5 QuickStraps™ **AND** cinch them firmly.

STEP 5: Wrap the remaining QuickStrap™ webbing around the strap once to and use Velcro™ closures to contain the excess as shown in **step 5**.

Operation

1) This item is a climbing obstacle for water use. Users climb up, down or through various climbing walls. Users may also enter the interior portion of the item from various openings. Interior area is designed for splashing in shallow water. This item must be used with at least one Aquaglide Platinum boarding platform.

2) When connecting multiple items, use only Aquaglide Interloc™ straps and connecting rings according to the Interloc™ Strap instructions provided. Make sure that the connection is tight and that there is **NO GAP** greater than 25mm (~3/4") between items. **IMPORTANT: Failure to connect these items properly may result in injury or death.**

3) We strongly recommend maintaining supervision at all times during use by a professionally certified lifeguard. **NEVER** use unattended.

4) **USE COMMON SENSE.** Never jump or dive from the product. When standing on the top of the product be aware that motion could cause a loss of balance and injury.

5) Do not exceed the product's recommended number of users or capacity.

6) Do not swim, stand or climb below any other climbers. Ensure that all swimmers have cleared the area before entering the water. Never swim underneath the product.

7) The maximum weight capacity is 400 lbs. (181 Kg). It is acceptable to have up to **THREE** people on the product.

IMPORTANT:

- Do not exceed product weight capacity.
- Do not concentrate more than 300 lbs. (136 kg) in any one area.
- Do not use without adequate air pressure - 1.6 p.s.i. (0,110 bar) minimum

8) If the product shows any signs of instability or appears to have lost air pressure, immediately discontinue use. Check and monitor moorings, air pressure and air-holding ability. Do not continue use until these are confirmed.

Care and Maintenance

1) While your product has been initially treated with UV protectant, long-term exposure to sunlight will damage the product. Regularly apply a UV protectant to the exposed surface of the tube to ensure the life of your product. We recommend using **ONLY 303 UV Protectant** intended for use on vinyl for this purpose. Monthly application while the product is in use is required. **NOT DOING THIS CAN VOID THE WARRANTY.** 303 UV Protectant is available at most watersports dealers, or online at www.303-products.com.

2) **WARNING:** Certain products, especially petroleum-based solvents, cleaners and protectants such as ArmorAll can damage the product and use of these products will void the warranty.

3) **WARNING:** Use of a high-pressure washer will damage the product and void the warranty. To clean, use a soft bristle brush with mild soap and fresh water. 303 UV Protectant contains a 'safe for vinyl' cleaner, and can be used to clean and protect the product at the same time.

4) Check the inflation of your tube often. Check for proper air pressure using a manometer. It may appear to have lost air in cooler temperatures, and may expand in warmer temperatures. Maximum expansion will occur in the heat of the day. Proper inflation is critical to the safe operation of your product and will prolong damage from wear.

Storage

1) For short term storage, it is possible to store the item inflated on a pool deck. To prevent accidental damage, make sure that the item will not be punctured, abraded or dragged across the pool deck.

2) For long term storage, review the following steps. If necessary, clean with mild soap and water and allow to dry completely. For products that are exposed to the sun, apply 303 UV Protectant to the surface of the product before deflating.

3) Remove all air from the tube using the deflation end of the high output inflator/deflator.

4) Fold the deflated tube in thirds then roll or fold toward the valve.

5) For long term storage, keep the product out of direct sunlight and protected from the environment in a clean, dry location. Store in a sealed water-proof container (i.e. a plastic covered box or bin). It is best to store inside a container to prevent damage from rodents. **NEVER** store uncovered, in a damp location, or on a concrete surface! **NEVER** store at temperatures below 40 degrees F.

WORK SPACE AND TOOLS

1. Take care to position yourself in a clean, dry area with good ventilation. For proper curing of adhesives, temperature should remain above 10°C (50 F). In most cases you will need enough room to inflate the product.
2. **Repair Kit Contents:** PVC Patch material, PVC Glue, Instructions.
3. **Additional items that MAY be needed:** Air pump, sharp scissors and/ or razor knife, dish washing liquid, water, small bowl or spray bottle, 120 Grit sandpaper, solvent such as MEK (Methyl Ethyl Ketone) or rubbing alcohol, china marker, small 'chip' brush or disposable paint brush, clean dry cloth.

LOCATE LEAK(S)

1. If there is a problem with air leaks, you will need to locate the leak(s) first.
2. Inflate your Aquaglide® Platinum™ product fully. Some small leaks can close themselves at lower air pressures, so it is best to maintain full pressure by re-inflating periodically while checking for leaks.
3. Use a soapy water solution (50%/ 50% dish soap & water) and a cloth to check for leaks. Work slowly around the product spraying or swabbing-on soapy water solution. Look for growing bubbles, which indicate a leak.
4. Once a leak is confirmed, dry the area well, mark it and prepare to patch.

PATCHING

Reinforced PVC Patch with high-grade adhesive.

**** IMPORTANT: leaks must be patched with the item completely deflated, and patches must be allowed to cure for 24 hours.**

1. DEFLATE your Aquaglide® Platinum™ product completely.
2. Carefully cut PVC patch material to size using sharp scissors or razor knife.
 - a. Patch should be least 3 - 5cm (1-2") larger than hole IN ALL DIRECTIONS around any air leak. This means a minimum patch size of 5cm x 5cm (2" x 2") for a pinhole leak. The larger the patch, the better.
 - b. Square patches with rounded corners are usually best, as this reduces the risk of peeling.
3. Dry-fit the patch over the area to be repaired to ensure good fit and coverage.
4. Use a clean 120 grit sand paper to rough up the surface to be patched AND ALSO the back of the patch material.

5. Use solvent (MEK or Rubbing Alcohol) and a fresh cloth to clean the sanded areas, removing all debris.
6. Dry-fit the patch again and use china marker (provided) to carefully outline where the patch will be located.
7. Next, use the glue (provided). Use a disposable 'chip' brush to spread glue if needed. Try to work neatly and quickly.
 - a. Using disposable brush, apply a thin, even layer of glue to the repair area making sure to cover the area completely. Stay INSIDE the china marker outline.
 - b. Using disposable brush, apply a thin, even layer of glue to the to the back of the patch making sure to cover the area completely.
 - c. Allow glue to cure for approximately 60 seconds.
 - d. Starting at one corner, carefully align the patch over the repair area using the china marker outline as a guide. Once the two surfaces touch, the bond will be immediate, so take care.
 - e. Starting at one corner and working outward, carefully apply the patch to the repair area using very firm pressure.
 - f. Rub the entire patch area and the edges of the patch using very firm pressure.
 - g. Allow to cure for at least 24 hours before inflating.



NOTICE! - Release of Liability, Claim Waiver, and Assumption of Risk Agreement

By opening and assembling this product, you are agreeing (1) to be bound to the terms set forth below and (2) to require anyone using this product to be bound by such terms. If you are unwilling to be bound by these terms, return this product (before use) for a full refund.

ASSUMPTION OF RISK: Use of this product and any of its components involves certain inherent risks, dangers, and hazards which can result in serious personal injury and death. In using the product, you freely agree to assume and accept any and all known and unknown risks of injury while using this equipment. The risks inherent in the sport can be greatly reduced by abiding by the Warning Guidelines listed in this Owner's Manual and by using common sense.

RELEASE AND WAIVER OF CLAIMS AGREEMENT: In consideration of the sale of the product to you, you hereby agree to the fullest extent permitted by law as follows:

TO WAIVE ANY AND ALL CLAIMS that you have or may in the future have against North Sports Inc., its distributors and dealers, resulting from use of this product and any of its components.

TO RELEASE North Sports, Inc. from any and all liability for any loss, damage, injury, or expense that you or any users of this product may suffer, or that your next of kin may suffer, as a result of the use of this product, due to any cause whatsoever, including negligence or breach of contract on the part of North Sports Inc. in the design or manufacture of this product and any of its components.

ARBITRATION: In further consideration of the sale to you of this product and any of its components, you hereby agree to submit to binding arbitration any and all claims which you believe you may have against North Sports Inc. arising from the use of any North Sports Inc. equipment or products. The arbitration shall be pursuant to the rules of the American Arbitration Association. Arbitration shall be commenced within (1) year from the date on which any alleged claim first arose. Further, the arbitration shall be held in White Salmon, Washington unless otherwise mutually agreed to by all parties. The submission to the American Arbitration Association shall be unlimited and the arbitration award may be enforced by any Court of competent jurisdiction.

BINDING EFFECT OF AGREEMENT: In the event of your death or incapacity, this Agreement shall be effective and binding upon your heirs, next of kin, executors, administrators, assigns, and representatives.

ENTIRE AGREEMENT: In entering into this Agreement, you are not relying upon any oral or written representations other than what is set forth in this agreement and the North Sports Inc. Owner's Manual.

Warranty

North Sports, Inc. warrants products to be free of defects in material or workmanship to the original purchaser for a period of Three (3) years from date of purchase. This warranty is subject to the following limitations:

1. Warranty is valid only with dated proof of purchase in the form of the original invoice.

2. Warranty is valid only when the product is used for normal recreational activities, and does not cover use in schools or rental operations. Warranty term for commercial use is 1 year.

3. Aquaglide will make the final warranty determination which may require inspection and/or photos of the product which clearly show defect(s). We require the above be sent to another location of our choice, freight prepaid, or by email to support@aquaglide.com.

4. If a product is deemed to be defective by Aquaglide, the warranty covers the repair or replacement of the defective product only. Aquaglide will not be responsible for any costs, losses, or damages incurred as a result of loss of use of product.

5. This warranty does not cover damage caused

by misuse, abuse, neglect, or normal wear and tear, including, but not limited to, punctures, dragging the product over the ground, damage due to excessive sun exposure or seam failure due to overinflation in the sun, damage caused by improper handling and storage, damage caused by use in waves or shore break, and damage caused by anything other than defects in materials and workmanship.

6. This warranty is voided if any unauthorized repair, change, or modification has been made to any part of the equipment. Authorization for such must come in writing from Aquaglide.

7. The warranty for any repaired or replacement equipment is good from the date of the original purchase only.

8. Any warranty claims must be accompanied by the original purchase receipt. The name of the retailer and date of purchase must be clear and legible.

9. There are no warranties which extend beyond the warranty specified here.

Returns and Service Policy

Product can be returned only if a return

authorization number (RA) is given by Aquaglide in advance. The RA number must be on the outside of the package or it will not be accepted at our warehouse. Freight on the returned product must be prepaid or it will not be accepted. Upon receipt, Aquaglide will make a determination within (30) days. If the product is covered under warranty it will be returned to the customer at the expense of North Sports, Inc. after repairs can be made. If not, the customer will receive a quote for repair and/ or replacement as well as any necessary cleaning and shipping charges. The customer will have 30 days to accept the quotation. At the end of 30 days, or upon refusal of the quote, Aquaglide will return the product in the condition in which it was received at the customer's expense. The customer agrees to authorize North Sports, Inc. to charge the customer's credit card for any costs not covered under the terms and conditions of the Aquaglide Warranty.

Serial Number

All Aquaglide Platinum products are marked with a serial number near the main inflation valve (#1). The serial number may be stamped into the PVC directly around the valve, or it may be visible on a welded plate near the valve. Please include this number when you contact Aquaglide, or your dealer, with any warranty claim.